

# **EAST TO WEST PLANT SERVICES**

---

CAPABILITY STATEMENT | 2020



Richard McNamara  
General Manager - WA  
0429 077 699

Shane Finnerty  
General Manager - NSW  
0457 617 787

[admin@easttowestplantservices.com](mailto:admin@easttowestplantservices.com)  
[www.easttowestplantservices.com](http://www.easttowestplantservices.com)  
Instagram: [east\\_to\\_west\\_plant\\_services](#)

# MANAGEMENT TEAM



Richard McNamara  
General Manager - WA

Richard has over 20 years experience in all aspects of the earthmoving and plant hire industry

Richard has been operating in WA for 10 years in various Civil Supervisor roles for Tier 1 to Tier 3 contractors. Contracting to both the Mining and Infrastructure sector, Richard has put his management skills to good use for companies including BHP, Chevron and John Holland



Shane Finnerty  
General Manager - NSW

Shane has over 20 years experience in large scale bulk excavation works, drainage and pipe laying, earthmoving fleet maintenance and logistical management.

Shane has held various Superintendent Project Manager and Civil Supervisor roles throughout his 8 years in NSW and also managed his own family Plant Hire business in Ireland



Thelma O'Connor  
Commercial Manager

Thelma O'Connor is an integral part of the Contracts Team across all divisions. Her focus is providing an exceptional service and liaising with a broad range of people to coordinate the project pipeline. Thelma has a demonstrated history of working in the Infrastructure industry. Skilled in Tender Submissions, Project Coordination, and Communication.

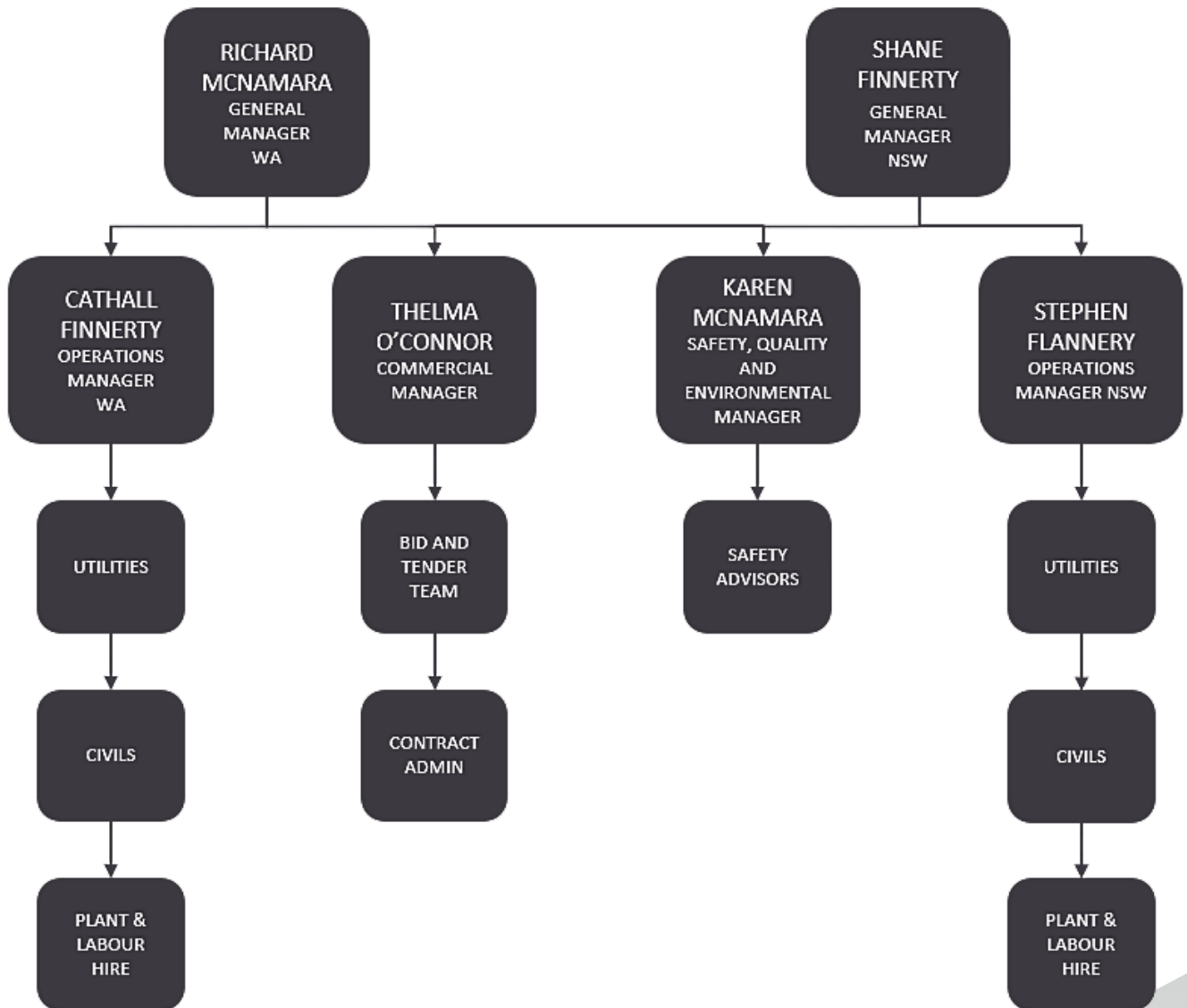


Karen McNamara  
SOE Manager

Karen McNamara has over 10 years of experience in the construction industry. Karen ensures that company practices comply with appropriate policies and procedures for efficient and effective project and contract management, consistency of practice and conformity with government policy and legislative requirements.



# ORGANISATION STRUCTURE





## ABOUT US

East to West Plant Services Pty Ltd is one of Australia's fastest growing civil construction, plant and labour hire company servicing the Western Australia and New South Wales civil, private and construction sectors. The company was formed by Richard McNamara and Shane Finnerty who have a combined 40 years experience in the construction and earthmoving industry.

Our expertise, efficiency and accountability throughout all aspects of our external and internal operations makes us the perfect partner for your next project.

### EXPERIENCED, AMBITIOUS, ACCOUNTABLE

- 250 Projects Completed
- 100 Staff Members
- 15 Million Man Hours
- 40 Years Experience

### COMMITMENT TO SAFETY

Safety is central to our operational mindset and approach. We protect our people and yours through our commitment to compliance, safe work practices and continual refinement of our operating procedures



### INVESTMENT IN OUR PEOPLE

We recognise that whilst the end product is important, the journey forms a significant part of the overall success of every project. Because of this, we undertake an extensive recruitment and training program to ensure we are able to provide our clients with the best possible service, people and plant. Our team of construction professionals have a genuine desire to understand and work with our clients to realise their vision.

### THE ENVIRONMENT & SUSTAINABILITY

We are committed to applying operating practices and procedures that ensure the protection of the environment as well as respect for public and private property.

### VISION

OUR CORE VALUES ARE TO PROVIDE A STATE OF THE ART RANGE, SAFE AND PROFESSIONAL UTILITY, CIVIL, FORMWORK AND PLANT HIRE EQUIPMENT SOLUTIONS EAST TO WEST.





# UTILITY INSTALLATION

**EAST TO WEST offers a comprehensive range of installation, diversion, repair and upgrade services for water, drainage and wastewater solutions.**

**Our nation-wide, yet local presence allows us the flexibility to deliver greenfield and brownfield services for both small scale and large scale applications on short notice.**

**We also provide total and partial pump station pipe works replacement (pumps, stop valve, reflux valves, various types of joints) and a variety of pipe works including PVC, DICL, Stainless Steel and more to various stormwater drainage works projects.**

**Our experienced Supervision team can assist your team by providing advice on solutions for temporary and permanent applications for your project.**



- DRAINAGE
- WATER
- SEWER
- REPAIR & MAINTENANCE
- SERVICE LOCATING

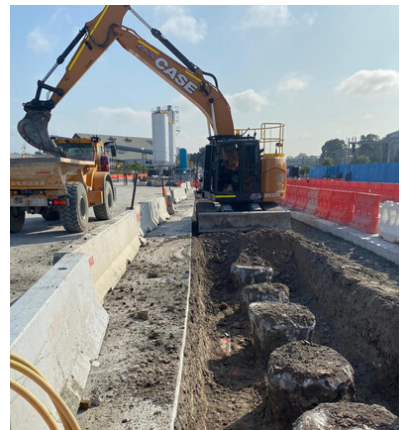
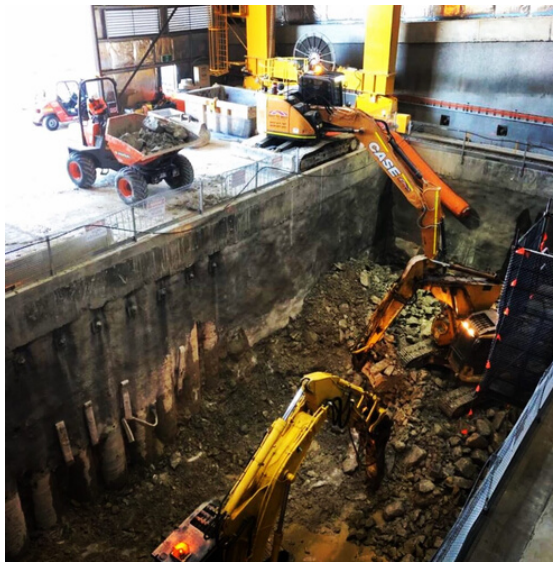




## CIVIL CONSTRUCTION

**EAST TO WEST has the capability and experience to safely operate in both above and below ground environments. Our Civil Construction team offer safe, quality and competitive turn key solutions on a wide variety of civil construction applications including ramp and shaft excavation, spoil movement and stockpile management, rock sawing, rock breaking, final trim works and piling pad preparation.**

**We are able to offer Lump Sum solutions or provide Supervision, Management and Labour hire options which can be tailored to your Project needs. All of our services are available 24 hours a day, 7 days a week every day of the year. Our Project Managers, Supervisors and Plant Operators are experienced on Tier 1 construction sites where they have gained a reputation as being team players who safely undertake tasks in conjunction with other trades.**



- BULK EXCAVATION
- FINAL TRIM
- SITE LEVELLING
- SITE ESTABLISHMENT
- ROCK SAWING
- FOUNDATIONS PREPARATION
- SUPERVISION
- PROJECT MANAGEMENT
- LABOUR HIRE

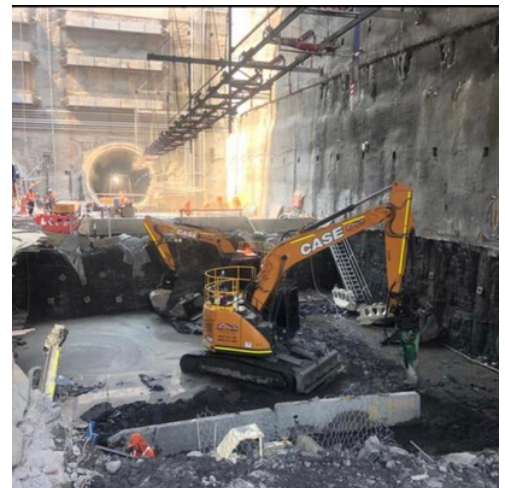
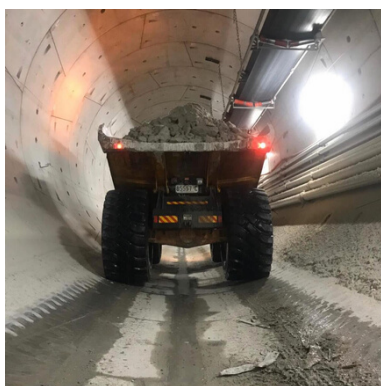


# PLANT HIRE

**EAST TO WEST also offers a large range of plant hire options what can be tailored to your project. We are able to offer both dry hire and wet hire options on all of our plant and equipment with prompt 24 hour servicing. All of our operators are highly professional and come with RIIS/VOC accreditation prior to arrival on site.**

**Our fleet includes:**

- **5t-40t Tracked Excavators with attachments including:**
  - **Rock saws / Rippers / Rock Breakers / Load Rite / GPS**
- **25t Long Reach Excavators**
- **35t Telescopic Clamshell Excavators**
- **6t - 15t Wheeled Excavators with attachments**
- **Bobcat skidsteers with sweeper head attachments**
- **Road Sweepers and Sucker trucks**
- **6T/9T Site Dumpers**
- **Range of Wheeled Loaders with Load Rite**
- **6 wheel tip trucks**
- **Moxys (various sizes)**
- **Dozers (various sizes)**
- **Tool trucks and 4t tippers for crews**
- **Watercarts (fully mine spec)**



- **24/7 365**
- **AVAILABILITY & SERVICE**
- **TRACKED EXCAVATORS**
- **WHEELED EXCAVATORS**
- **LONG REACH EXCAVATORS**
- **STREET SWEEPERS**
- **LOADERS**
- **DUMP TRUCKS AND TIPPERS**
- **GRADERS**





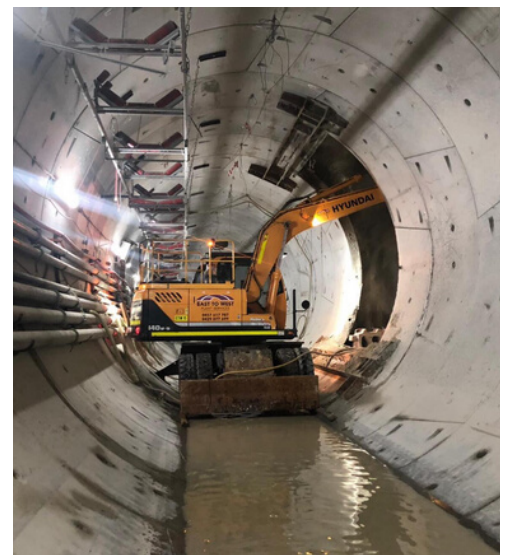
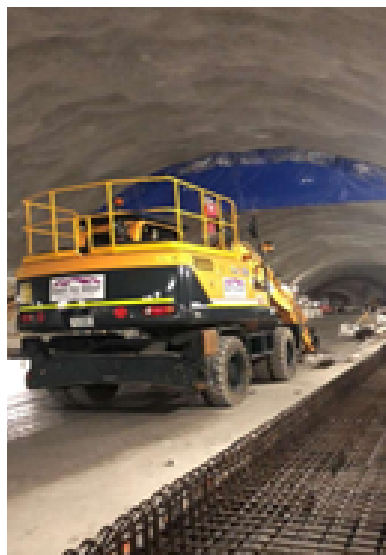
# WHEELED EXCAVATORS

We are proud to say we have one of Australia's largest fleets of Road Registered Wheeled Excavators (rubber ducks).

Commonly used in Europe, these machines are the perfect fit for Civil and Infrastructure works where they can travel between sites without damaging pavement, foundations or compacted earthworks.

We are able to provide a variety of attachments to suit your project including:

- Excavation buckets
- Sweeper attachments (perfect for a final clean prior to handover or inspections)
- Rock hammers
- Lifting jibs
- Forks
- Rocksaws



- 6T - 15T WHEELED EXCAVATORS
- ROAD REGISTERED
- FLEXIBLE
- SKILLED OPERATORS



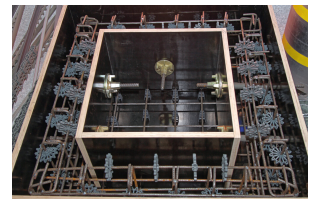
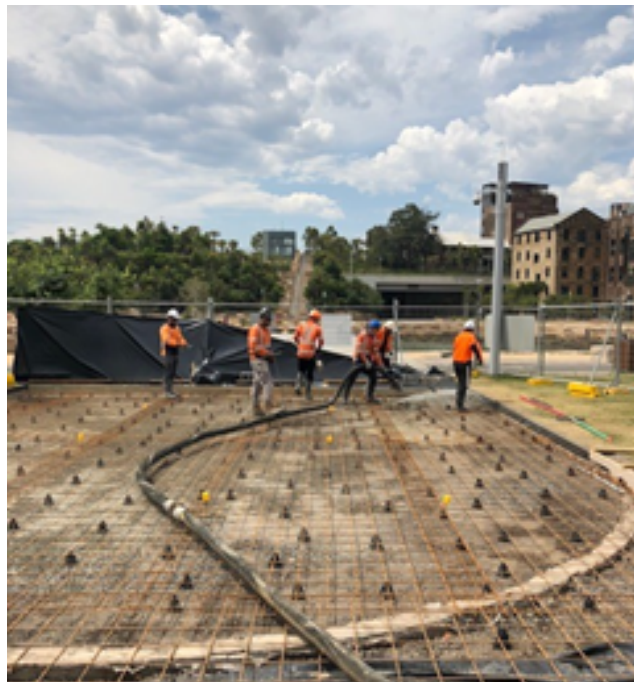


# FORMWORK AND CONCRETE

**EAST TO WEST also offers an in-house, highly skilled and experienced formwork and concreting team.**

**We understand that flexibility is key on large scale projects, therefore our extensive team has been set up with the capability to provide your project with lump sum contract works or labour hire teams to undertake these tasks or to supplement workforce numbers for short periods of time.**

**East to West understands the requirements of Tier 1 contracts, and are capable of providing temporary works designs for wall formwork where required by the project**



- FOUNDATIONS
- SLABS
- PAVEMENT TO MRWA / RMS SPECIFICATIONS
- PITS
- SERVICE PROTECTION



## CURRENT PROJECTS

### Sydney Metro

Chatswood Site

Barangaroo Site

Blues Point Site

Marrickville Site

### Sydney Harbour Redevelopment Works

### Sydney Light Rail

### Northconnex

## PREVIOUS CLIENTS

